



Tektōn™ Firestation Building Guide

This manual belongs to:



 **WARNING:**
CHOKING HAZARD— small parts
Not for children under 3 yrs.



Are you curious about

How buildings are made?

How bridges work?

How chemical plants operate?

The Girder and Panel™, Bridge and Turnpike™, and Hydrodynamic™ building sets were developed to help answer these questions!

The building sets are designed to be replicas of actual buildings and bridges using a 1/87 scale (also known as HO scale)



Accessories

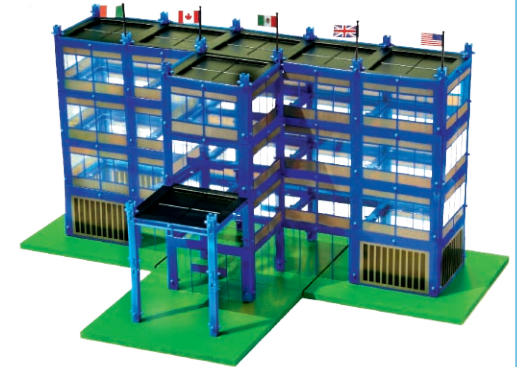


Tektōn™ Bank Building

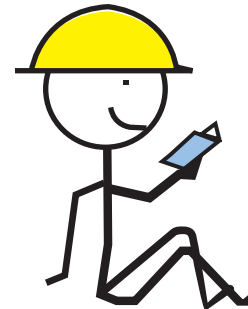
Investigate the strongest structure for a tall building with the Girder and Panel™ set. Or the strongest design for a bridge with the Bridge and Turnpike™ set.

Or have fun pumping water through tanks and changing the water flow by opening and closing valves in the piping with the Hydrodynamic set!

These classic sets help you understand and test the basic concepts of building strength (physics) and how water moves (fluid dynamics) in a fun, and creative way.



Tektōn™ Plaza Building

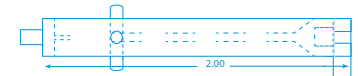
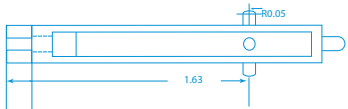


The parts in each of these sets are interchangeable with the other sets, and the sets can be combined to create entire cities: complete with office buildings, airports, highways, and manufacturing plants.

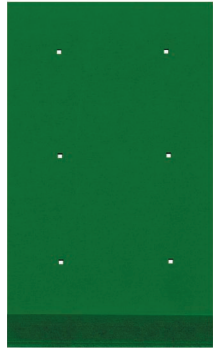
Design...

Construct...

Play!



Included with Tektōn™ Firestation



2 footings



25 beams

24 columns



12 stabs



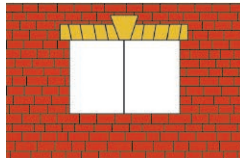
4 flags



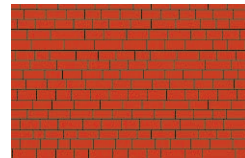
6 roof panels



3 door panels



8 window panels



6 wall panels



2 signs



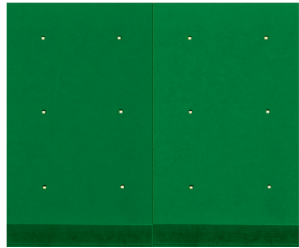
1 idea book



1 storage case

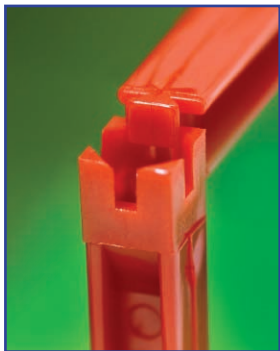
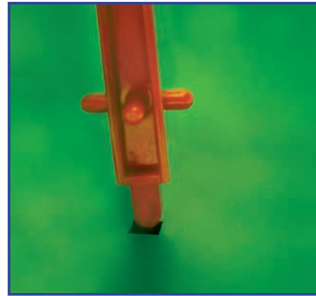


How The Parts Work

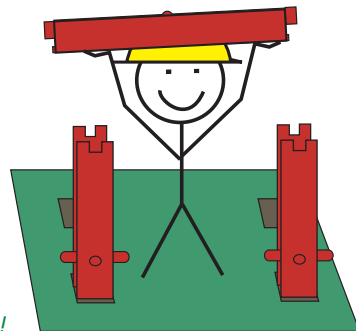


Like this for a rectangular shaped firestation.

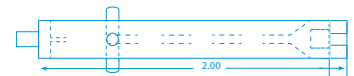
2nd Take the columns (see page 4 if you need help figuring out what the column looks like) and place them in the square holes in the foundation pieces (footings).



3rd Connect pairs of columns with a beam. The notch on the top of the beam slides into the top slot in the column.



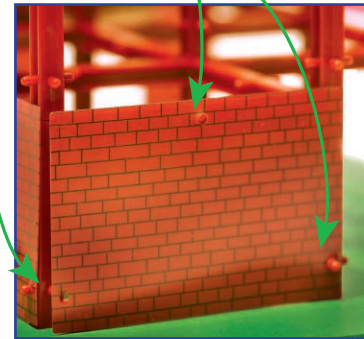
Tip: The columns may be a tight fit the first time that you put them into the footings. However, after a couple of uses, they fit perfect and are easy to use!



Another column or stub can be used to lock the beams in place.



place panel onto these 3 pegs



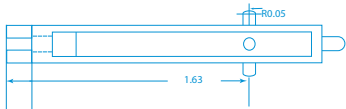
4th Once your structure is built, attach the panels to the side using the three pegs. Start with the ground floor and then work your way up the side of your structure.

5th Now for the finishing touches.

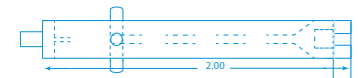
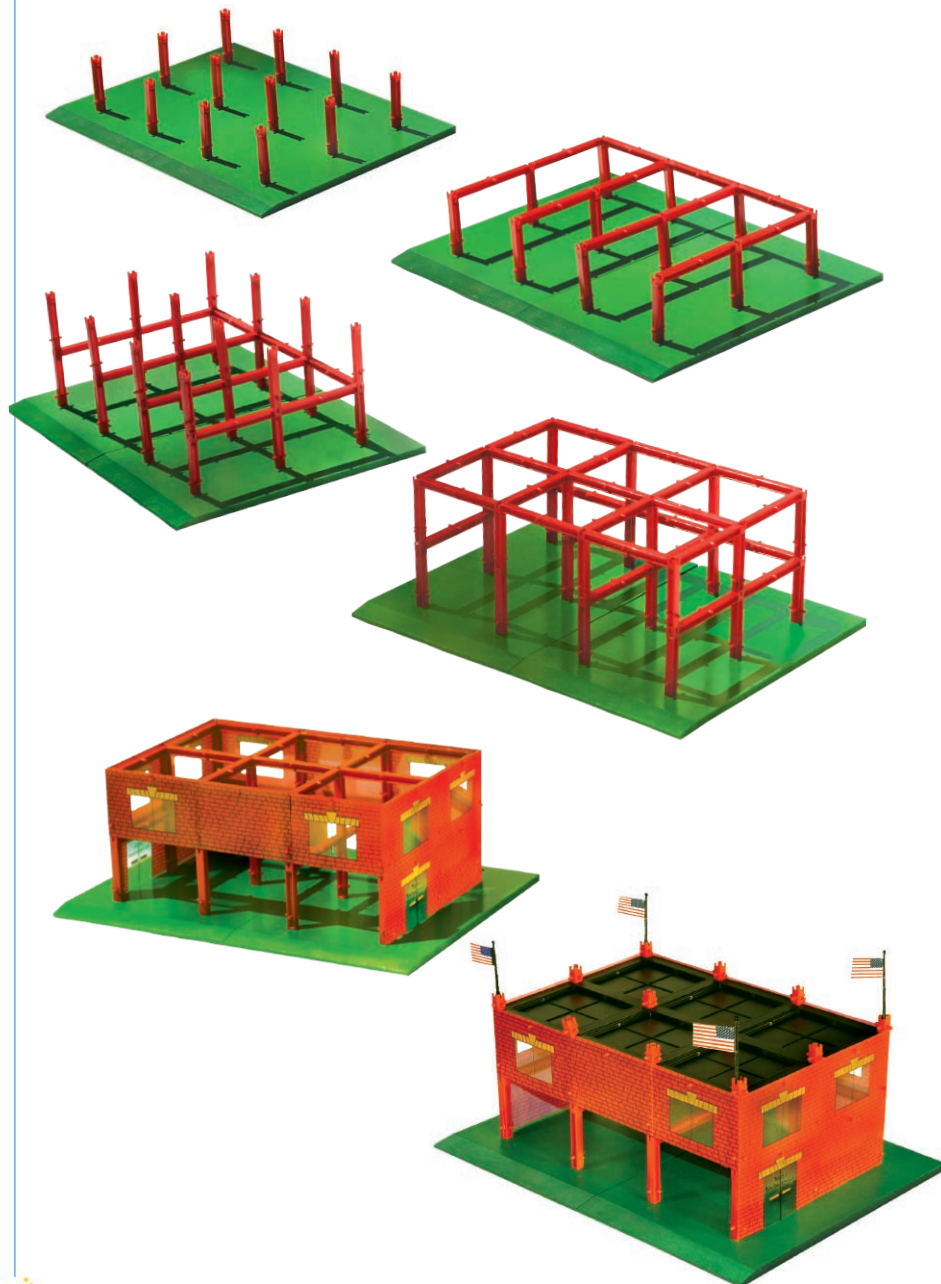
Roofs: Lay the roof panels on the top of your building. Push them down gently until they are flush with the beams. Stubs may be used to secure the roof panels in place, though they are not necessary.



Flags and Flag Poles: Bend the flag slightly and insert notches in flag between two small posts on flagpole. Then insert the flag pole into the top of a stub or column.



Blueprints



Did you know?

There are three things needed to have a fire: extreme heat, oxygen, and fuel (such as wood, cloth or other material).

To put out a fire, you can cool it so that there isn't enough heat for it to keep burning. You can also smother it (so it doesn't get the oxygen fires need), or you can remove the fuel.

There are two kinds of fire trucks: a pumper and a ladder truck. The pumper brings in water from fire hydrants or nearby lakes, and a ladder truck is used to get firefighters to the top floors of tall buildings, where they use their hoses to put out the fire.

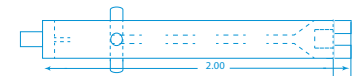
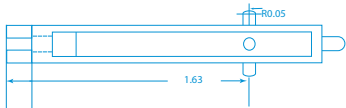
Smokey Bear became the Forest Service mascot in 1944. Smokey was so popular that he was given his own zip code because he received such a large amount of fan mail.

Benjamin Franklin established the first volunteer fire department in Philadelphia, PA in 1736.

Famous volunteer firefighters have included George Washington, Thomas Jefferson, Benjamin Franklin, Samuel Adams, Paul Revere, Benedict Arnold, James Buchanan, and Millard Fillmore.

No city in the United States had fully paid, full-time firefighters before 1850!

Women started serving as volunteer firefighters as early as 1818! The first woman to volunteer as a firefighter was Molly Williams, who was a slave in New York. Molly bravely fought fires wearing a calico dress and checkered apron.



Have a Problem Or a Question?

Contact Us

Please let us know if we can help you.

customerservice@BridgeStreetToys.com
1-781-237-5005

Have a Great Idea?

Do you have a great idea for a building and want to share it with other builders?

Send it to us at: funstuff@BridgeStreetToys.com

We will post pictures of creative buildings on our website's *Hall of Fame* page.

p.s. Please send your photo in "jpeg" format and include your first name and age.

Need More Parts?

No problem. We are selling spare parts! Check with your favorite local, educational toy shop, if they're not available there you can order them online through our website: <http://www.BridgeStreetToys.com>

Our Promise to You

We guarantee our products to be free of materials and manufacturing defects. Should your building set have a defect which makes the set unusable, please contact our customer service department for a replacement product.

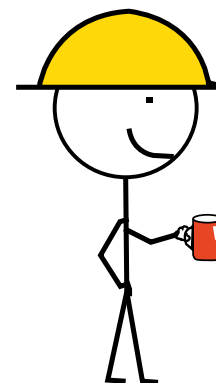
Other Products From Bridge Street Toys

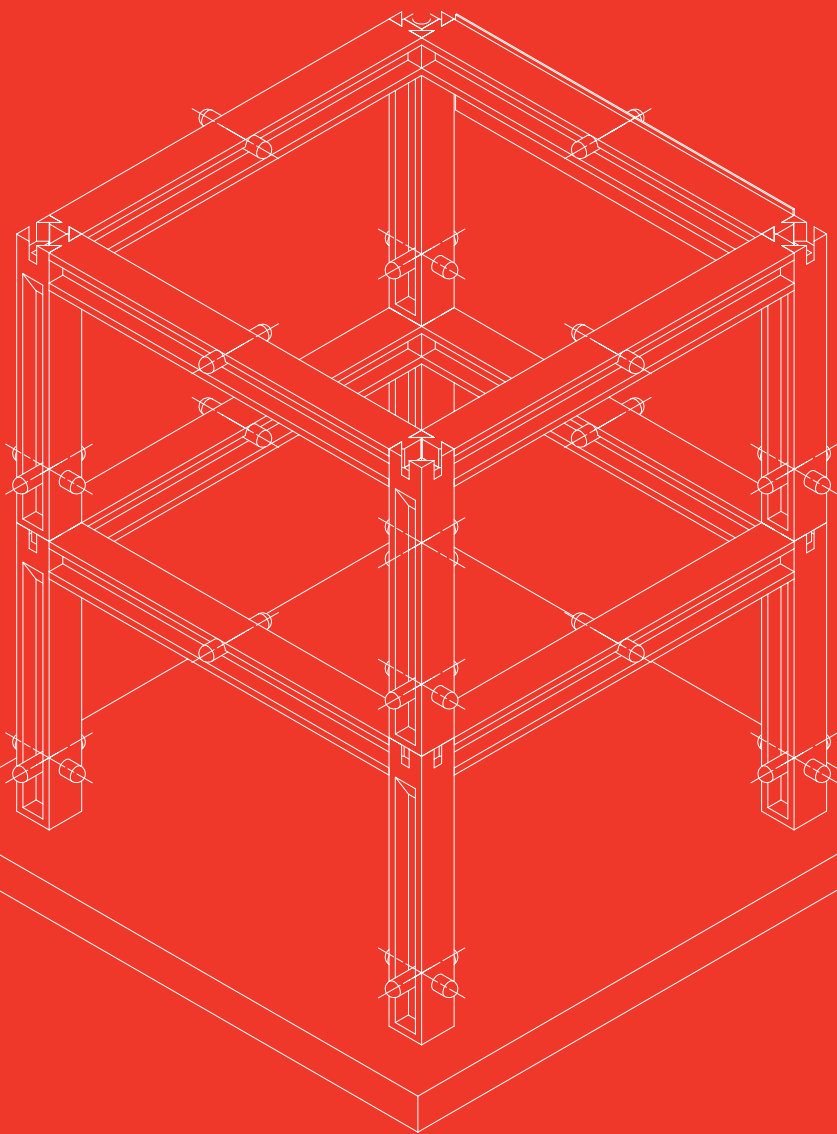
Bridge-Mania,
a Bridge &
Turnpike™
Building Set

City Buildings,
Girder & Panel™
Building Sets

A Skyscraper, a
Train Station, and
Boston Turnpike Set

Hydrodynamic™
Building Set





© 2005, Bridge Street Toys™ LLC
Weston, MA 02493

www.BridgeStreetToys.com