

# Tektōn™ Bank Building Guide

This manual belongs to: \_\_\_\_\_





## Are you curious about

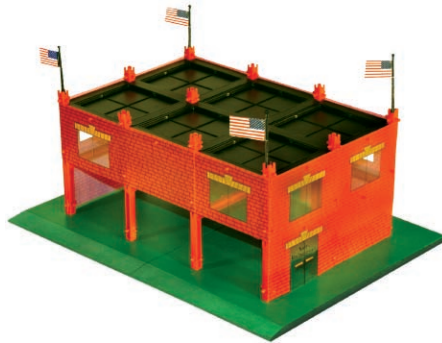
How buildings are made?

How bridges work?

How chemical plants operate?

The Girder and Panel™, Bridge and Turnpike™, and Hydrodynamic™ building sets were developed to help answer these questions!

The building sets are designed to be replicas of actual buildings and bridges using a 1/87 scale (also known as HO scale).



Tektōn™ Fire Station

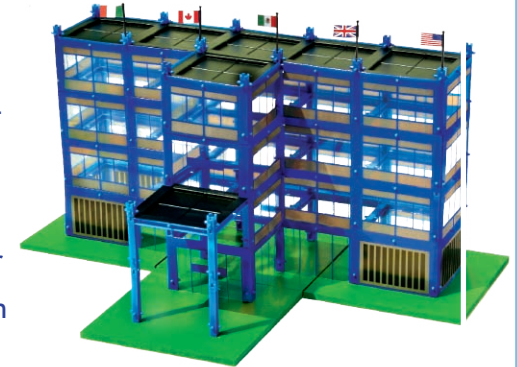


Accessories

Investigate the strongest structure for a tall building with the Girder and Panel™ set. Or the strongest design for a bridge with the Bridge and Turnpike™ set.

Or have fun pumping water through tanks and changing the water flow by opening and closing valves in the piping with the Hydrodynamic set!

These classic sets help you understand and test the basic concepts of building strength (physics) and how water moves (fluid dynamics) in a fun, and creative way.



Tektōn™ Plaza Building

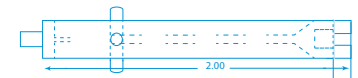
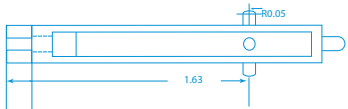


The parts in each of these sets are interchangeable with the other sets, and the sets can be combined to create entire cities: complete with office buildings, airports, highways, and manufacturing plants.

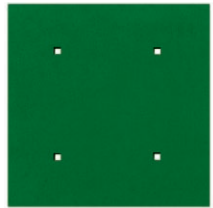
**Design ...**

**Construct ...**

**Play!**



# Included with Tektōn™ Bank Building



2 footings



28 columns



32 beams



8 stubs



4 flags



3 roof panels



8 window-in-wall panels



6 front door panels



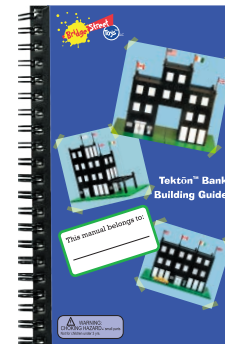
2 signs



8 lobby window panels



3 side door panels



1 idea book



1 storage case



## How The Parts Work



**1st** Start with a solid foundation. Place the footings together to form the shape of the structure you will build.

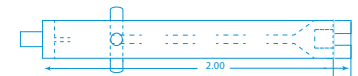
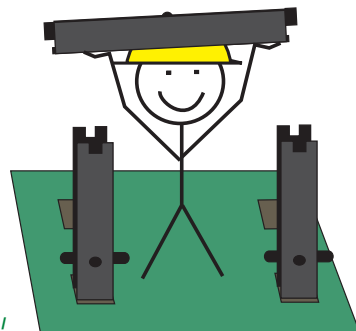
*Like this for a rectangular shaped firestation.*

**2nd** Take the columns (see page 4 if you need help figuring out what the column looks like) and place them in the square holes in the foundation pieces (footings).



**3rd** Connect pairs of columns with a beam. The notch on the top of the beam slides into the top slot in the column.

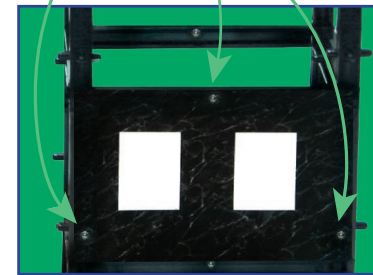
**Tip:** The columns may be a tight fit the first time that you put them into the footings. However, after a couple of uses, they fit perfect and are easy to use!



Another column or stub can be used to lock the beams in place.



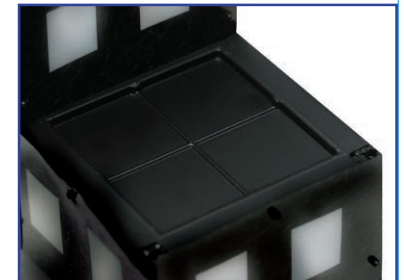
*place panel onto these 3 pegs*



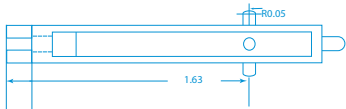
**4th** Once your structure is built, attach the panels to the side using the three pegs. Start with the ground floor and then work your way up the side of your structure.

**5th** Now for the finishing touches.

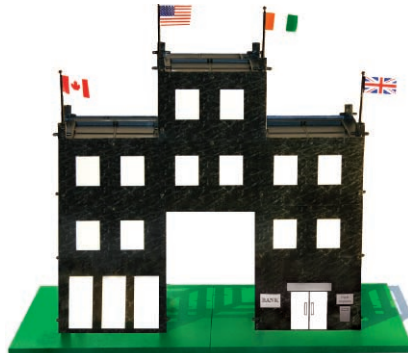
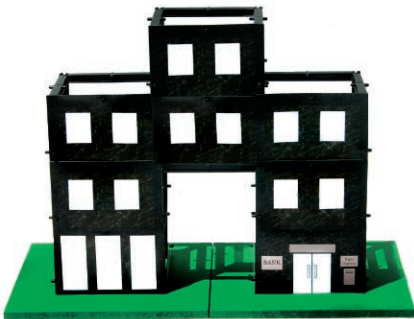
**Roofs:** Lay the roof panels on the top of your building. Push them down gently until they are flush with the beams. Stubs may be used to secure the roof panels in place, though they are not necessary.



**Flags and Flag Poles:** Bend the flag slightly and insert notches in flag between two small posts on flagpole. Then insert the flag pole into the top of a stub or column.



## Blueprints



## Did you know?

The first bank in the United States was the North Bank, founded in 1781, in Pennsylvania.

When you put your money into a savings account it earns interest. **Interest** is money the bank pays you so that they can use your money to fund loans for other people. But that doesn't mean you can't have your money whenever you want it. That's just how banks make money – by selling money!

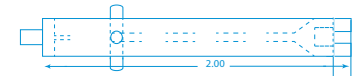
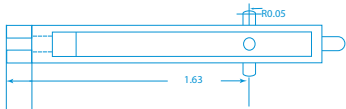
40% of all banks failed and had to close between 1929–1933.

The years between 1929–1933 were called **the great depression** in America. Many people lost their savings when the banks failed. So, in 1933 the US Government created the Federal Deposit Insurance Corporation. This organization makes sure that if the bank fails then the US Government will give you back up to \$100,000 of your money.

The **first credit cards** in America were introduced in 1914 by Western Union, and they were called 'metal money' because they were metal cards.

Visa, the most popular credit card in America, has issued over 1 billion cards!

Paul Revere designed the first coins for the "Continental Currency." The first coins were produced in 1793 by the Philadelphia Mint.



## Have a Problem Or a Question?

### Contact Us

Please let us know if we can help you.

customerservice@BridgeStreetToys.com  
1-781-237-5005

## Have a Great Idea?

Do you have a great idea for a building and want to share it with other builders?

Send it to us at: funstuff@BridgeStreetToys.com

We will post pictures of creative buildings on our website's *Hall of Fame* page.

p.s. Please send your photo in "jpeg" format and include your first name and age.

## Need More Parts?

No problem. We are selling spare parts! Check with your favorite local, educational toy shop, if they're not available there you can order them online through our website: <http://www.BridgeStreetToys.com>

## Our Promise to You

We guarantee our products to be free of materials and manufacturing defects. Should your building set have a defect which makes the set unusable, please contact our customer service department for a replacement product.

## Other Products From Bridge Street Toys



Bridge-Mania,  
a Bridge &  
Turnpike™  
Building Set



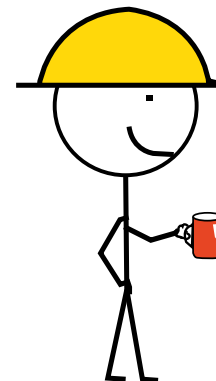
City Buildings,  
Girder & Panel™  
Building Sets

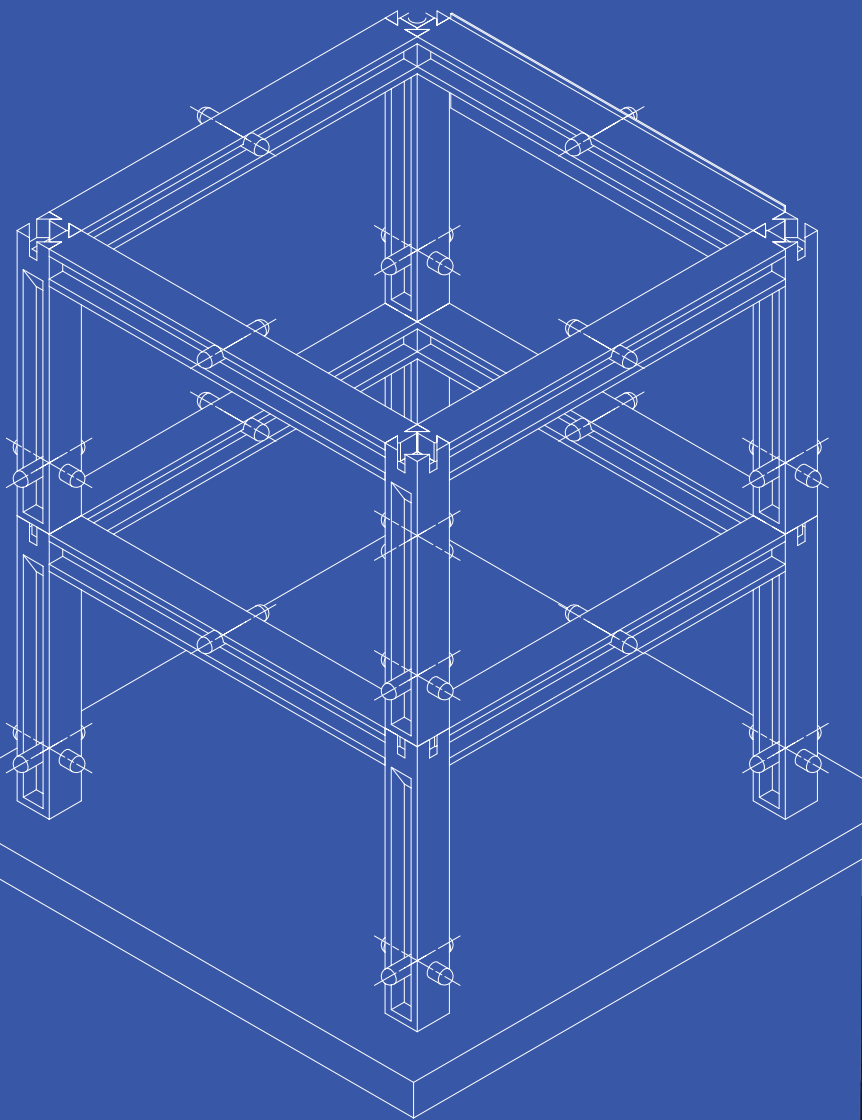


A Skyscraper, a  
Train Station, and  
Boston Turnpike Set



Hydrodynamic™  
Building Set





© 2005, Bridge Street Toys™ LLC  
Weston, MA 02493

[www.BridgeStreetToys.com](http://www.BridgeStreetToys.com)

